



3a Hospital Street, Daylesford

A brand-new double storey home showcasing
the craftsmanship of award-winning Daylesford Builders

www.daylesfordbuilders.com.au

Find Your Way Home.



johne
evans
real estate

These talented local builders have incorporated innovative design, eco-friendly features and stylish, modern décor to create a home that provides elegant, low maintenance country living.

The home is sited in an easily accessible elevated position in central Daylesford, tantalisingly close to cafés, shops and restaurants, and has been designed to take full advantage of the magnificent views over our beautiful township towards the Wombat State Forest.

Come and experience this stunning home that more than meets the requirements of modern family living, and is versatile enough to provide the ultimate country retreat for extended family and guests.

- The street level entry with portico directly accesses the upper floor. A wide hallway, perfect for treasured artworks and photographs, leads to the vast living-dining area that extends across the full width of the rear of the house, highlighting the magnificent views from this elevated position. This area features high vaulted ceilings, beautiful timber flooring and two sets of floor-to-ceiling doors that slide away to access the wide covered alfresco deck.
- Taking pride of place in this area is the beautifully designed open kitchen - a cook's delight featuring custom joinery with soft close drawers, plenty of preparation space and gleaming stainless steel appliances including gas cooktop, electric underbench oven & designer rangehood.
- Adjoining the kitchen is a large butler's pantry with more storage and bench space, stainless steel dishwasher and room for a large refrigerator. The laundry/storeroom is also immediately adjacent to the kitchen, and includes a front loading washing machine.
- The separate study, or 4th bedroom, has a "picture window" opening to the living area.
- Also on this level are two large east-facing bedrooms, both with ceiling fans and a wall of built-in robes, and a huge bathroom featuring custom joinery, large format tiling, heated towel rail, twin vanity basins, spa bath, separate shower and toilet.
- Downstairs is entirely devoted to the expansive master bedroom suite with its own wide covered deck and plenty of room for sofa and TV. The walk-through wardrobe has double hanging space and custom made drawers, while the luxury ensuite bathroom features a double shower, heated towel rail, twin vanity basins and toilet. This downstairs area offers superb versatility as a separate living zone for extended family or guests.



Rae Corris 0408 358 772
John Evans 5348 2328

43 Vincent St, Daylesford Vic 3460
03-5348 2328

www.johnevans.com.au

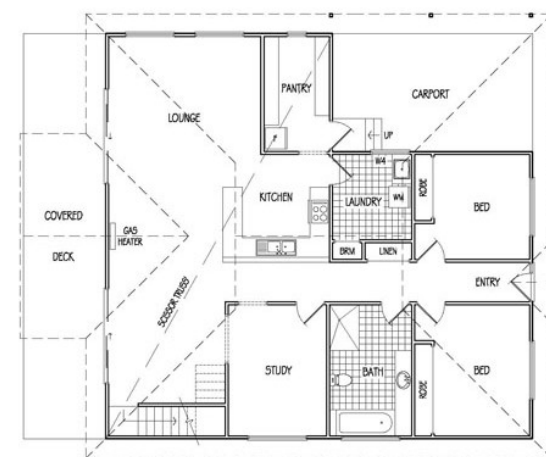


Ben Sims 0417 140 970

3-4

2

1



First Floor



Ground Floor